

Act local... Impact GLOBAL



EN COLLABORATION AVEC

**Hub Régional
de Cartographie
Collaborative**

AFRIQUE DE L'OUEST ET DU NORD



Vision

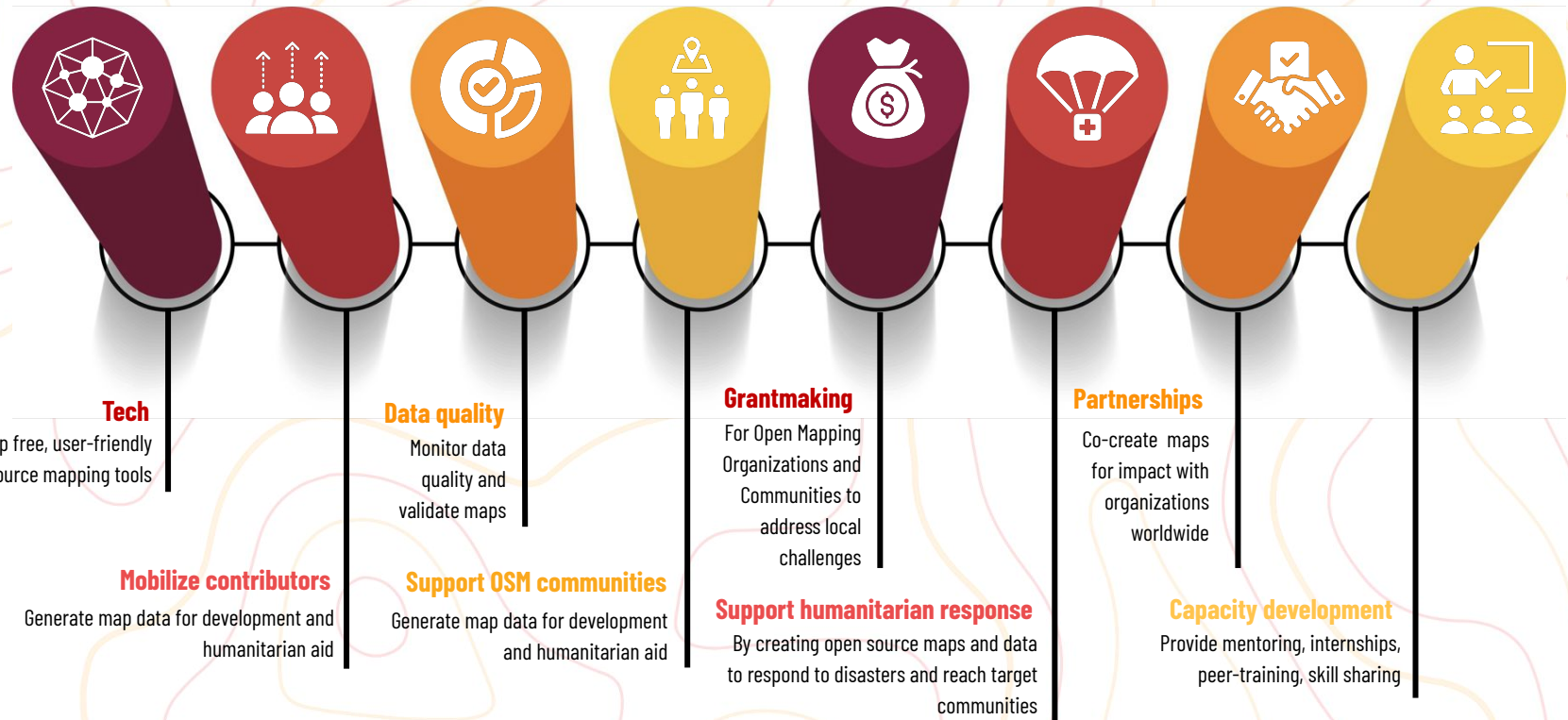
Stimulate and strengthen the leadership of communities in West and Northern Africa to protect their livelihoods, improve their resilience and preserve their way of life by promoting social justice in accessing open data and free software for their own purposes.

Missions

- Support local mapping communities to use open data and free software for community development and decision making to improve livelihoods
- Promote the use of accessible technology to stimulate local contribution to OSM
- Have as a leitmotif the collection of quality data, their good use backed by ethics and justice for human achievement
- Work with humanitarian organizations, governments, and other actors to help them use OpenStreetMap for decision making



UBUNTU



We have 5 thematic areas



 **Water
Access**



 **Climate
Change**




 **Public
Health**



 **Sustainable
Cities**



 **Community
Building**



**Water
Access**

Project Title: RUWA
Country: Niger
Focus: Mapping Water Points
Local Partner: GSN Niger



**Water
Access**

RUWA

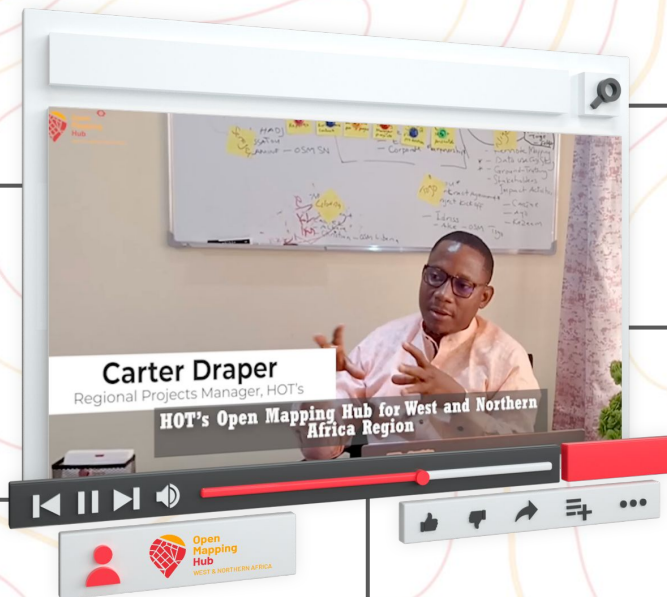
Mapping Water points

NIGER

Satellite Imagery 4 Social Good - NIGERIA

Hot goal alignment : Disaster Risk Reduction

Over **35 stakeholders** in Bauchi, Borno, Gombe and Yobe States benefited from the project directly.



3 Local Communities (a collabo of local OSM communities & tech hub conducted "Ground-truthing and remote activities)

20 Maps of Local Government Areas printed a distributed

35 flash drives containing open source software, pdf maps, training materials were distributed among participants attending A 3-day Stakeholders Impact Activity

A web-based interactive map developed using data generated and existing data currently accessible across Nigeria.

Comms / Partnerships / Fundraising

- Connection and mobilisation of partners, communities on the use of osm tools in the region

Partnership Outcome	Outputs
The hub is connected with partners	42 NGO and organism in contact within 12 countries in the regions
Agreement with partners, stakeholders within the regions for the use and improvement of users and supporters for humanitarian open street map	8 MOU signed
Exchange meetings and collaboration with stakeholders and partners in the Regions on mapping projects	Case of Ruwa project: participation and mobilisation of 30 stakeholders

http://umap.openstreetmap.fr/fr/map/impact-partnership-map-of-wnah_784268#5/17.309/1.033

Ubuntu

40%

Key achievements in Q3

Projects:

4 thematic projects now ongoing in Niger, Senegal, Togo; Liberia.

Each project at different stages of implementation and progressing well

Community:

Conducted OSM capacity building trainings across 10 countries (Gambia, Ghana, Liberia, Nigeria, Niger, Senegal, Togo, Mauritania, Burkina Faso & Cameroon)

Grants have been approved for 8 Countries

Partnership:

MoUs signed with GSPDD, Winrock - project concept note under draft with MyAgro to start a project in 2023 - Discussions ongoing with UNDP (Senegal, Niger), IRC (Ivory Coast) & WB to participate to the event (Understanding The Risk) in December in Niger

What have we learned ?

1: Many governmental, institutional and community partners show great interest in the work we do and want to collaborate

2: The creation of a dynamic OSM ecosystem, the sustainable implementation of activities requires a direct approach of the actors taking into account the diversities and specificities, for that a lot of field work, face to face meetings are necessary

Challenge/blocker we've faced + solution

1: Raining seasons (readjustment of the calendars)

2: Low projects management level of some of the OSM communities (capacity building and face to face meetings)

3: Complete the team

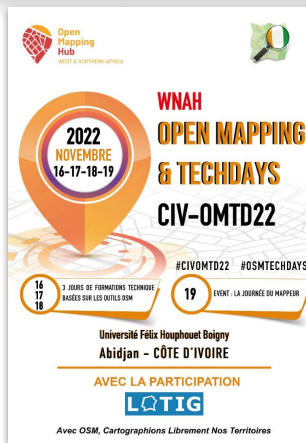
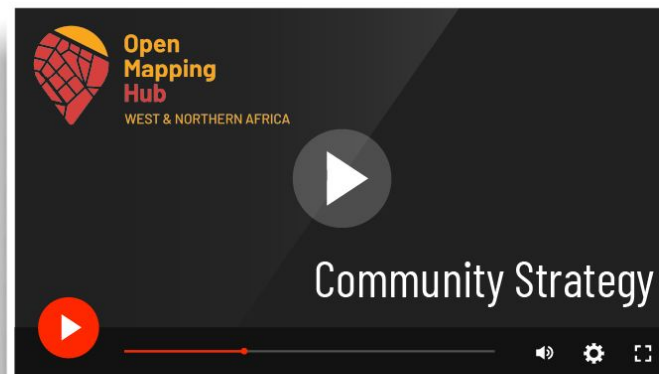
Key priorities in Q4

1: Follow up of implementation of the 4 thematic projects

2: The grants contribute to support at least 10 OSM communities across 10 countries in the region

3: Build the technical capacity skill of mappers community & partners and organise a regional hackfest,

4: Engage partners who have initiated discussions with the WNAH to collaborate on projects (MyAgro, GSPDD, Winrock)



HOT

Getting the **right data** at the **right place** at the **right time** to make decisions that save and improve **lives**.

Thank you



EN COLLABORATION AVEC



**Hub Régional
de Cartographie
Collaborative**

AFRIQUE DE L'OUEST ET DU NORD