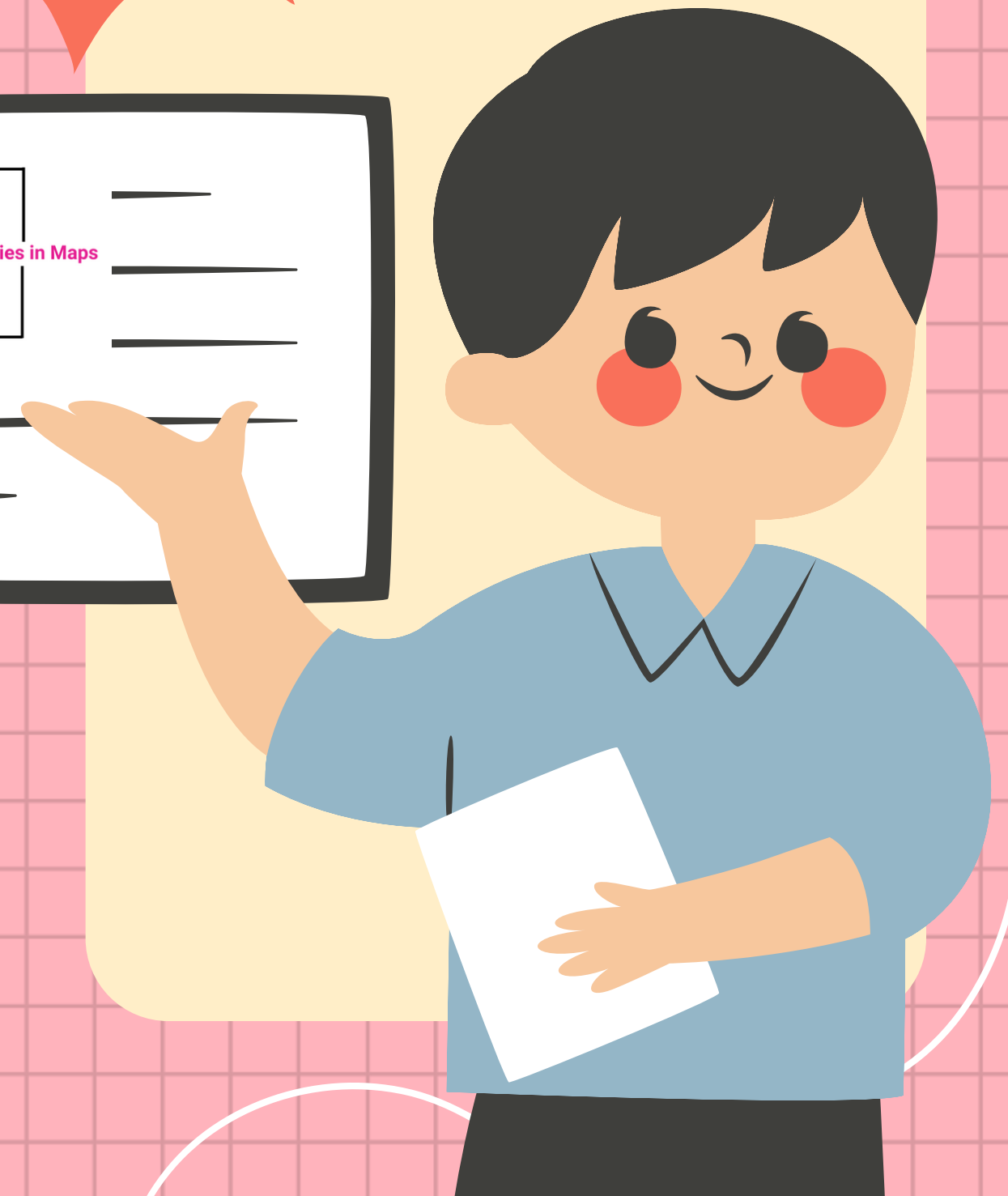
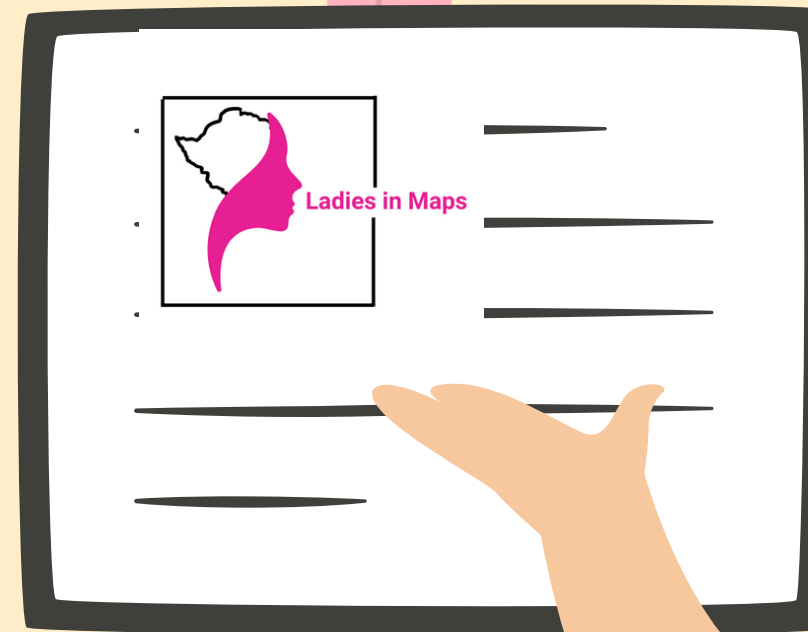
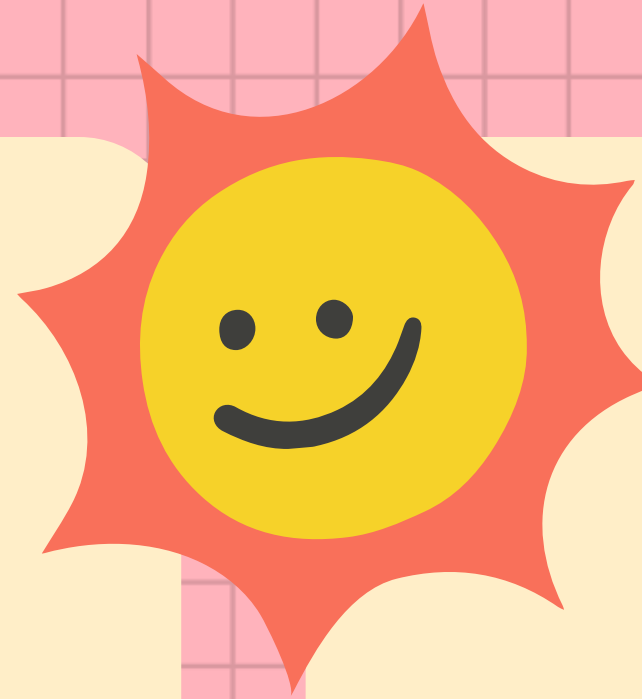
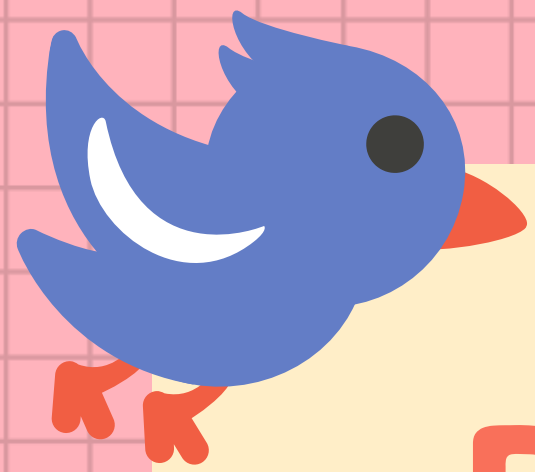


# LADIES IN MAPS ZIMBABWE #SHE4SHE

LETWIN PONDO

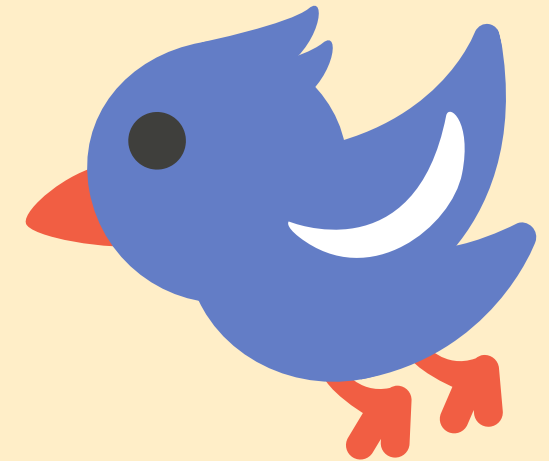
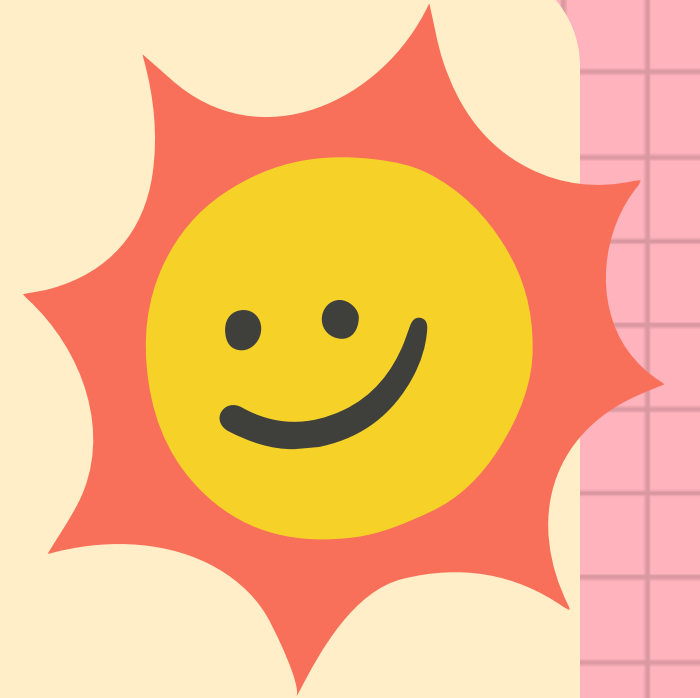




# BACKGROUND

## HOW LADIES IN MAPS CAME TO BE

1. Letwin inspired by SotM and FOSS4G 2022 in Italy and could identify gaps in women participation at the Events
2. Together with a few ladies in Zimbabwe, we started observing general participation of women in OSM
3. Inspired by one of our closest - Crowd2Map Tanzania then identified a cause closer to home to mobilize women to



# QUESTION NO.1



How did we address this?

1. Talked to women within OSM/Geospatial in Zimbabwe
2. Identified gaps in open data that relates to women
3. Invited other ladies sharing the same sentiments

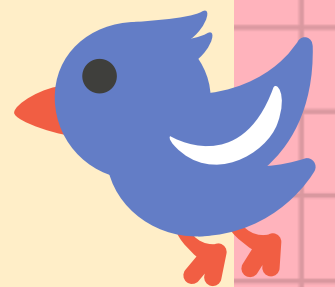




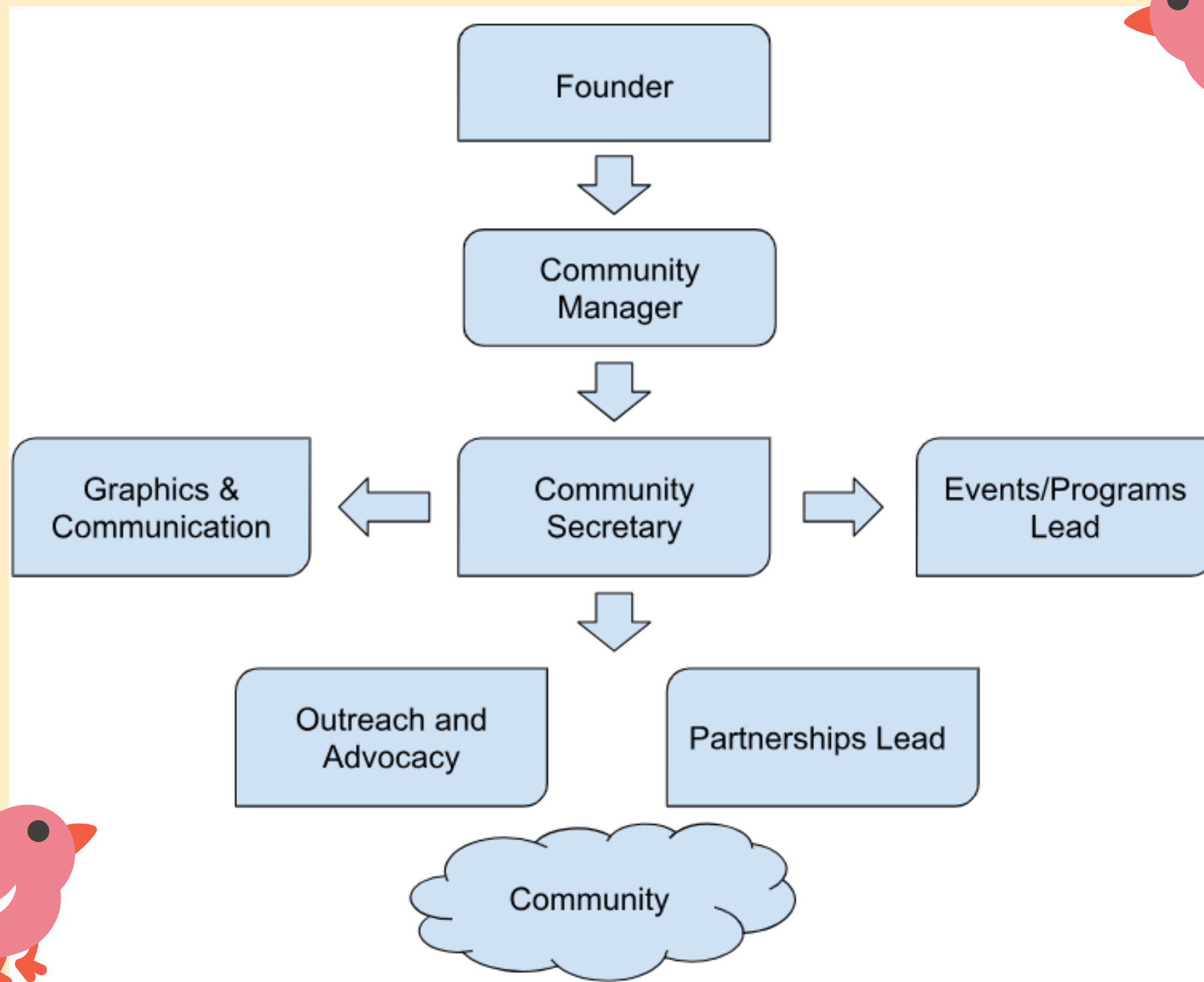
# WHO ARE WE?

A female focused #OpenStreetMap community with the aim of creating a community/environment that supports and encourages women in all aspects to participate in all things geospatial

- Founded by Letwin Pondo
- Started on 22 September 2022
- Started with approx. 71 members
- Being led by a team of 8 with distinct roles



# OPERATIONS/ ORGANOGRAM





## VISION

**Empowering women through open mapping for a positive change**



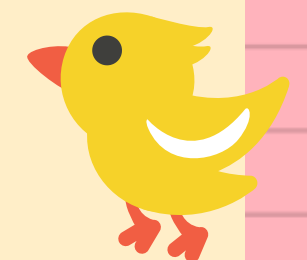

## MISSION

**To create a Zimbabwe where every girl has the opportunity to thrive, free from early marriage and school dropout, by fostering inclusive development through open mapping and promoting Sustainable Development Goals (SDGs) for women.**





# CORE VALUES

- **Open Mapping Remote Areas:** We will utilize open-source mapping tools and technologies to map remote and underserved communities in Zimbabwe, focusing on areas with high prevalence of early child marriage and school dropout amongst girls.
  - **Data-Driven Solutions:** By collecting and analyzing spatial data, we will identify key factors contributing to these challenges, enabling informed decision-making and targeted interventions.
  - **Advocacy and Awareness:** We will raise awareness about early child marriage and school dropout, advocating for policies and practices that promote girls' education, empowerment, and well-being.
  - **SDGs for Women:** We will integrate the SDGs for women into our mapping activities, ensuring that girls have equal access to education, healthcare, economic opportunities, and participation in decision-making processes.
  - **Community Collaboration:** We will work hand-in-hand with local communities, girls, government agencies, and civil society organizations to ensure the sustainability and impact of our initiatives.
- 
- 

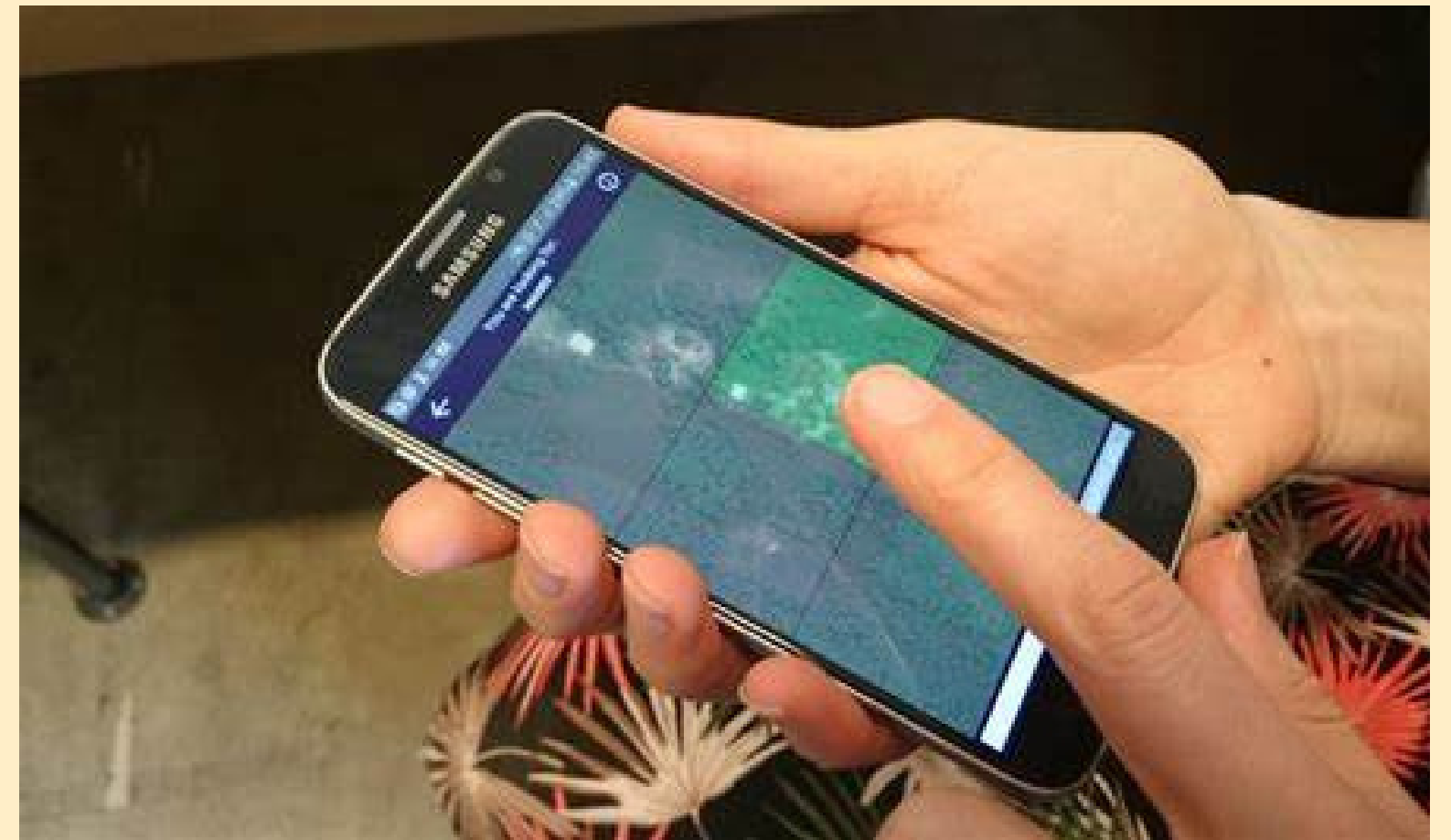
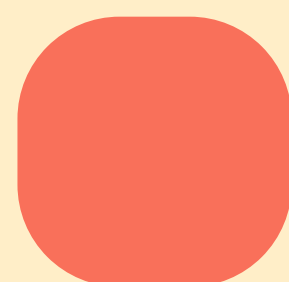
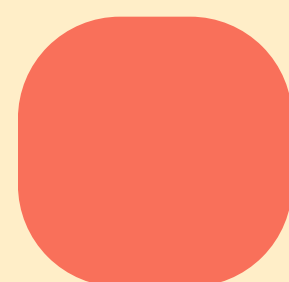


**OPEN HEARTS**

**OPEN MAPS**

**VOICES UNSEEN**

**FUTURES MAPPED**



**MapSwipe >>> HOT Tasking  
Manager**



# OMWA2024

**OPEN MAPPING WOMEN AWARDS 2024**  
8 MARCH 2024 INTERNATIONAL WOMEN'S DAY

**Community of the Year**

- DELIGHTED WOMAN INITIATIVE NIGERIA (Host: Hopital Bafamodei, Moderator: Chinenye Ufondu)
- LADIES IN MAPS ZIMBABWE
- LOCAL KNOWLEDGE MAPPERS AFRICA
- UNIQUEMAPPERS NIGERIA

**OPEN MAPPING WOMEN AWARDS 2024**  
8 MARCH 2024 INTERNATIONAL WOMEN'S DAY

**Women-focused Project of the Year**

- OPEN HEARTS OPEN MAPS #SHE4SHE ZIMBABWE (We're harnessing the power of open source)
- WOMEN CENTERED DISASTER RISK AND RESILIENCE IN SMALL ISLAND DEVELOPING STATES (CARIBBEAN)
- apolare Creando comunidad (CARTOGRAPHY AS A TOOL FOR THE PREVENTION OF SEXUAL VIOLENCE AGAINST WOMEN IN SAN LUIS POTOSÍ (MEXICO))
- CROWD2MAP TANZANIA
- GIRLS MAPPING FOR DISASTER RESILIENCE (GMDR)- TRINIDAD AND TOBAGO (CARIBBEAN)
- DELIGHTED WOMEN INITIATIVE NIGERIA

Letwin >> DEI Champion



THANK YOU  
FOR  
INVITING US

